

POLICY ON RESPONDING TO COVID-19 STUDENT EXPOSURE CORNERSTONE CLASSICAL ACADEMY

Effective Date: August 26, 2021

PURPOSE

Cornerstone Classical Academy, Inc. [hereafter referred to as "School"] strives to maintain a healthy and safe facility for all students. During times of an infectious disease outbreak, such as the Coronavirus Disease 2019 (COVID-19), School will take the necessary steps to protect the workplace and educational environment so that School can continue to operate effectively and efficiently in serving the needs of our students and staff. As part of that effort, School has developed this policy to address any suspected exposure to COVID-19 among the study body.

School is following government health and safety guidelines in dealing with the pandemic, including Florida Executive Order 21-175¹ and the Florida Department of Education (FDOE) 2021-22 School Year Student Protocols for Controlling COVID-19.² We recognize that such guidance may change over time as health experts continue to learn how to treat and combat this disease. Accordingly, this policy is susceptible to change with the introduction of additional guidance from local, state, and federal health experts and governments.

REPORTING REQUIREMENTS

Parents and students should be encouraged to self-report if the student is experiencing symptoms³ of COVID-19 or has come into close contact with a person confirmed to have COVID-19 or any similar infectious disease. Further, all parents/guardians have an affirmative duty to report to school administration if any student displays symptoms of COVID-19 or is suspected of having been exposed. The school administration will be responsible for notifying other parents, students, and employees as necessary. The parents/guardian should not take any further action until directed to do so by the administration.

Parents should be notified by the administrator or teacher if a student or staff/faculty member has tested positive for COVID-19.

RESPONDING TO POSSIBLE EXPOSURE

In the event the school administration believes a student is experiencing symptoms of or has been exposed to COVID-19 or a similar infectious disease, the student should be isolated from other students and faculty. The student's parent/guardian should be contacted immediately to discuss the situation and administrators may also question the student to gather additional information. The administration should seek to determine whether there is indeed a risk that the student has had close contact with someone with COVID-19 or is otherwise experiencing symptoms consistent with COVID-19.

If the administration makes an initial determination that the student may have been exposed to or is otherwise experiencing symptoms consistent with COVID-19, the student's parent/guardian should be advised to pick up the student as soon as possible. The parent/guardian should be notified that the student cannot return to school unless the student meets the criteria for returning to school outlined below.

¹ State of Florida, Office of the Governor, Executive Order Number 21-175, July 30, 2021, https://www.flgov.com/wp-content/uploads/orders/2021/EO_21-175.pdf

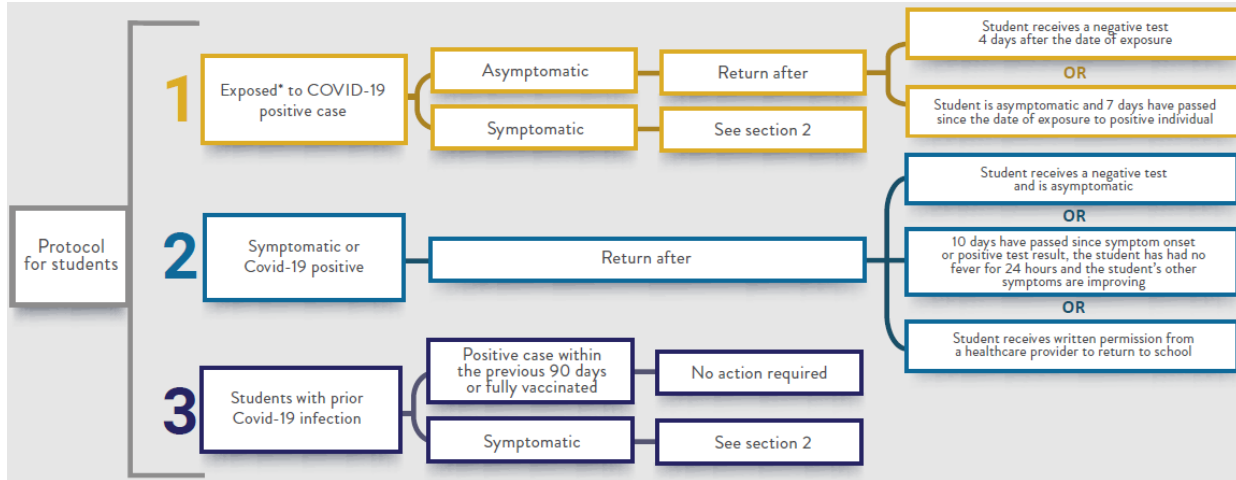
² See Appendix 1. Florida Department of Education, 2021-22 School Year Protocols for Controlling COVID-19, <https://www.fldoe.org/core/fileparse.php/19861/urlt/Covid2122DecisionTree.pdf>

³ "Symptoms" shall mean the following with regard to COVID-19: fever or chills, cough, shortness of breath or difficulty breathing, fatigue, muscle or body aches, headache, new loss of taste or smell, sore throat, congestion or runny nose, nausea or vomiting, diarrhea.

School must take all precautionary measures to safeguard the identity of the student who is confirmed or suspected of having been exposed to COVID-19.

RETURNING TO SCHOOL

School is adopting the FDOE 2021-22 School Year Protocols for Controlling COVID-19 for those students that have exhibited symptoms of COVID-19 or those students that have been exposed to a COVID-19 case.



This policy is intended to implement best practices to protect the health, safety, and welfare of all staff, students, and community members. The administration may adjust the procedures herein without Governing Board action on an emergency basis if School receives new guidance from federal, state, or local officials that change these best practices.

CERTIFICATION

This Policy on Responding to COVID-19 Student Exposure was updated and approved by a majority of a quorum of the Governing Board of School at a duly noticed meeting held on August 26, 2021.

David Wood

 Board Secretary Signature

David Wood

 Print Name

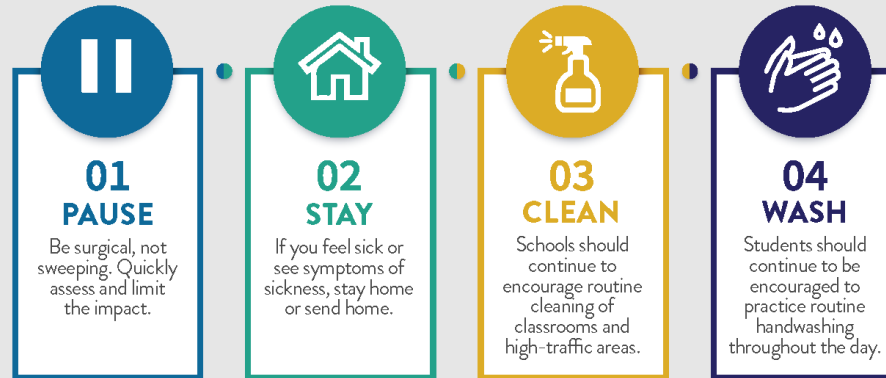
8/26/2021

 Date

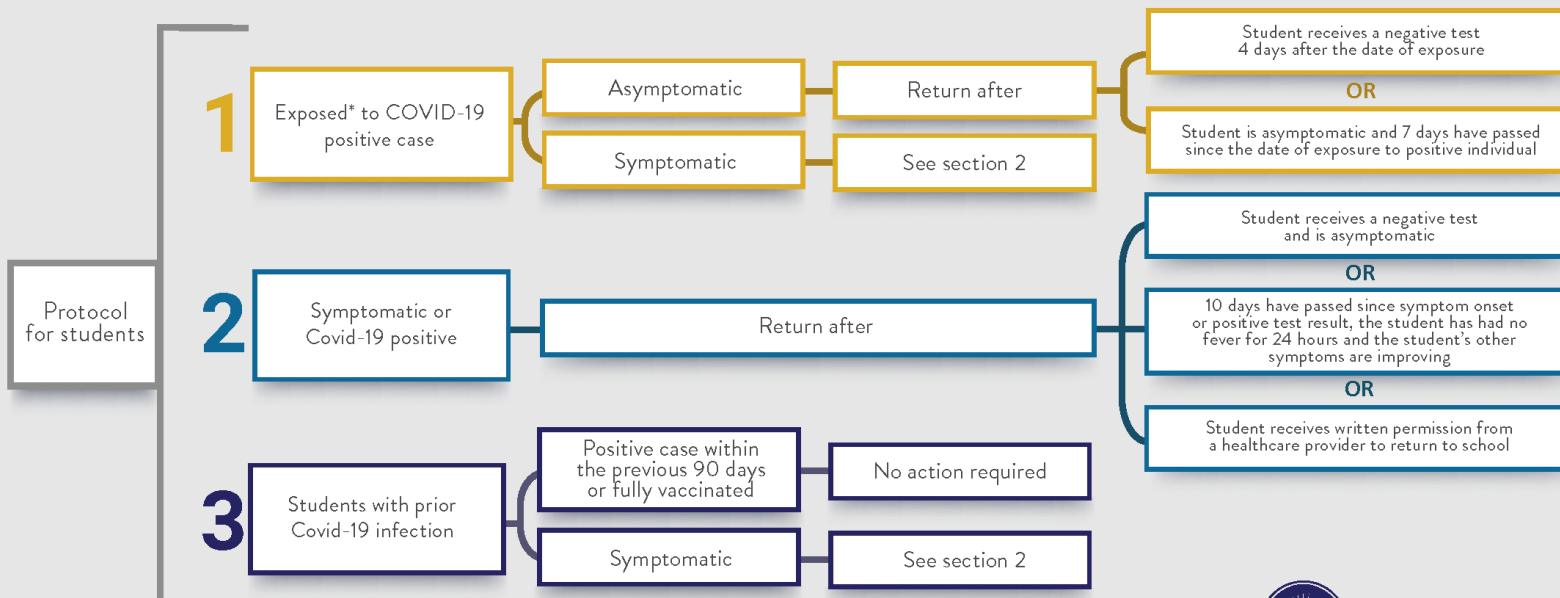
Appendix 1

2021-22 SCHOOL YEAR

PROTOCOLS FOR CONTROLLING COVID-19



COVID-19 SYMPTOMATIC DECISION TREE



*Per CDC, exposure is close contact of 6 feet or less for 15 minutes or more. Contact at greater than 6 feet or for less than 15 minutes is generally not sufficient to transmit the virus.

